



# GAT MONTHLY MEMBERSHIP PROGRESS REPORT

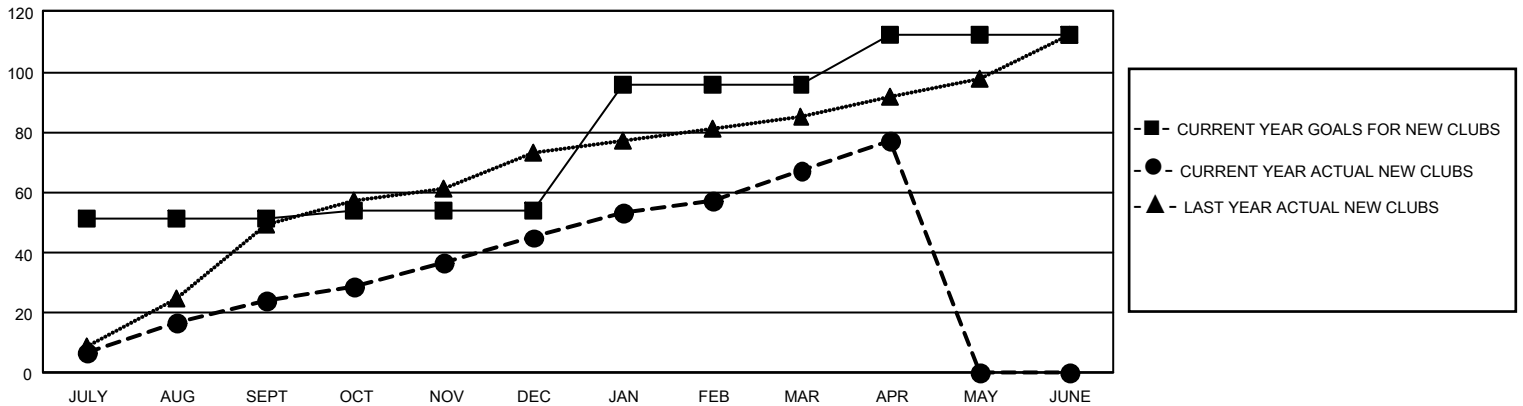
Results as of: 4/30/2025

## GMT Constitutional Area 6 - I, Group E

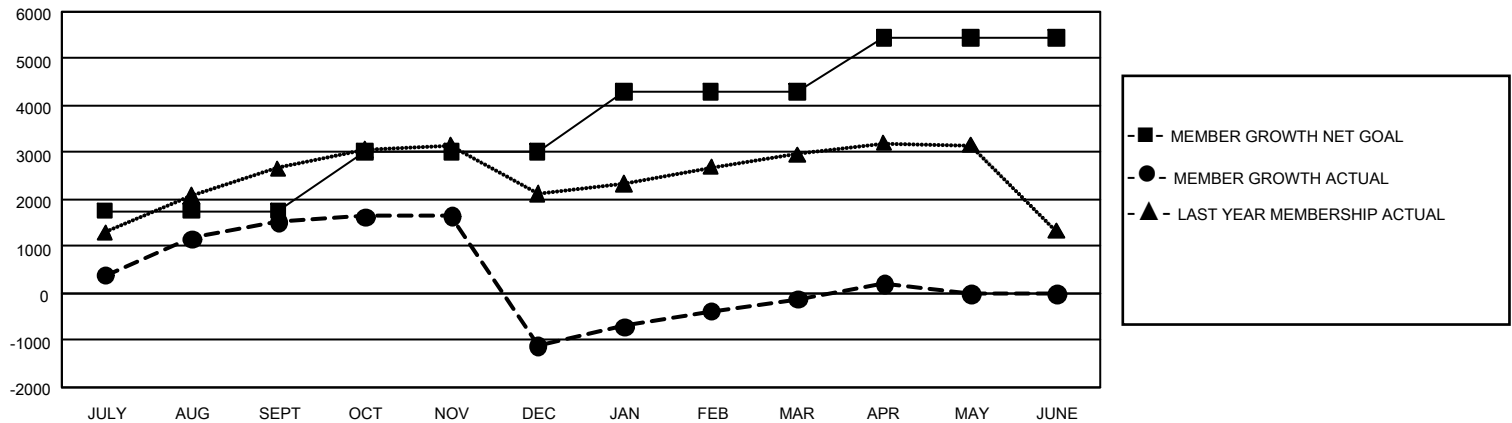
REPORT DOES NOT INCLUDE CLUBS IN UNDISTRICTED AREAS.

Clubs				Members			
RESULTS FOR 2024-2025				RESULTS FOR 2024-2025			
QUARTER	NEW CLUB GOAL	NEW CLUBS	DROPPED CLUBS	QUARTER	MEMBER GROWTH NET GOAL	MEMBER GROWTH ACTUAL	DROPPED MEMBERS ACTUAL (including transfers)
JULY/AUG/SEPT	153	24	8	JULY/AUG/SEPT	1753	3,174	1,354
OCT/NOV/DEC	9	21	112	OCT/NOV/DEC	1270	1,376	3,886
JAN/FEB/MAR	126	22	7	JAN/FEB/MAR	1270	1,947	549
APR/MAY/JUNE	48	10	0	APR/MAY/JUNE	1150	559	181

GOALS AND ACTUAL NEW CLUBS CUMULATIVE



GOALS AND ACTUAL MEMBERS CUMULATIVE



DROPPED CLUBS: 127

933 CLUBS OF 1,574 ADDED 1 OR MORE NEW MEMBERS

### GENDER DISTRIBUTION

MALE	38,356 (79.10%)
FEMALE	10,130 (20.89%)
NON BINARY	0 (0.00%)
PREFER NOT TO ANSWER	3 (0.01%)

### DROPPED MEMBERS

DECEASED	144
CLUB CANCELLED	1,900
OTHER	3,911
<b>TOTAL</b>	<b>5,955</b>

[CLICK HERE FOR CUMULATIVE MEMBERSHIP DATA](#)

TOTAL FAMILY UNIT MEMBERS	0
FAMILY MEMBERS PAYING HALF DUES	0